

## ► ETA-E | PERFORMANCE

ETA-E | Performance Table

MODEL	Nozzle Width (in.)	Max FPM at Nozzle	Avg. Outlet Velocity (FPM)	Airflow Rate (CFM)	Outlet Velocity Uniformity	Power Rating (kW)	Number of Motors	Motor HP	Heater kW	Temp. Rise (°F)	Weight (lbs)
ETA-1-36E	36	5654	1845	1310	82%	0.68	1	3/4	10	24.4	95
ETA-1-42E	42	5321	1903	1503	83%	0.71	1	3/4	10	21.2	102
ETA-1-48E	48	5296	1514	1438	85%	0.72	1	3/4	10	22.2	109
ETA-1-60E	60	5288	1343	1665	79%	0.78	1	3/4	10	19.2	121
ETA-2-72E	72	5654	1845	2620	82%	1.36	2	3/4	20	24.4	177
ETA-2-84E	84	5321	1903	3006	83%	1.42	2	3/4	20	21.2	195
ETA-2-96E	96	5296	1514	2876	85%	1.44	2	3/4	20	22.2	210
ETA-3-108E	108	5654	1845	3930	82%	2.04	3	3/4	30	24.4	255
ETA-3-120E	118	5340	1886	4316	82%	2.1	3	3/4	30	22.2	284
ETA-3-132E	133	5305	1617	4285	79%	2.14	3	3/4	30	22.4	301
ETA-4-144E	145	5654	1845	5240	82%	2.72	4	3/4	40	24.4	354
ETA-4-156E	157	5648	1876	5626	82%	2.78	4	3/4	40	22.7	372
ETA-4-168E	169	5321	1903	6012	83%	2.84	4	3/4	40	21.2	390



For a unit over 14 feet long, or a non-standard electric heater, consult factory.

ETA-E | Velocity Projection Model

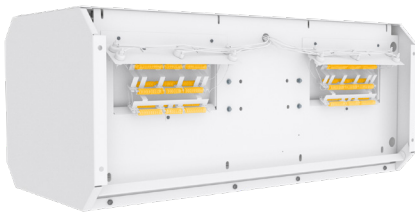
DISTANCE FROM NOZZLE	40"	80"	120"	160"	200"
ETA-1-36-E Core Velocity (fpm)	1133	1033	733	566	366

ETA-E | Sound Levels

Measured 10 ft. from unit in a free field based on a 1 motor unit      63 dBA

ETA-E | Single Phase Motor Options

Voltages available	120	208/230	480	575	For dual speed motors, consult factory. For three phase motors, consult factory
Amp draw per motor	8.0	3.6	2.0	1.5	



### Performance Highlight

Heating elements are mounted inside the plenum, on the discharge side of the blowers. Here, heat won't affect motor life and the heaters are protected from dust that would accumulate on them if they were mounted on the air intake.

The AMCA Certified Ratings Seal applies to airflow rate, average outlet velocity, outlet velocity uniformity, velocity projection and power rating at free delivery only. Rated data shown are based on tests of units with heating elements present but not in use.

Powered Aire Inc. certifies that the Model ETA-E Air Curtain shown herein is licensed to bear the AMCA Seal for Air Performance. The ratings shown are based on tests and procedures performed in accordance with AMCA Publication 211 and comply with the requirements of the AMCA Certified Ratings Program.

May 2020  
PAAC-204

