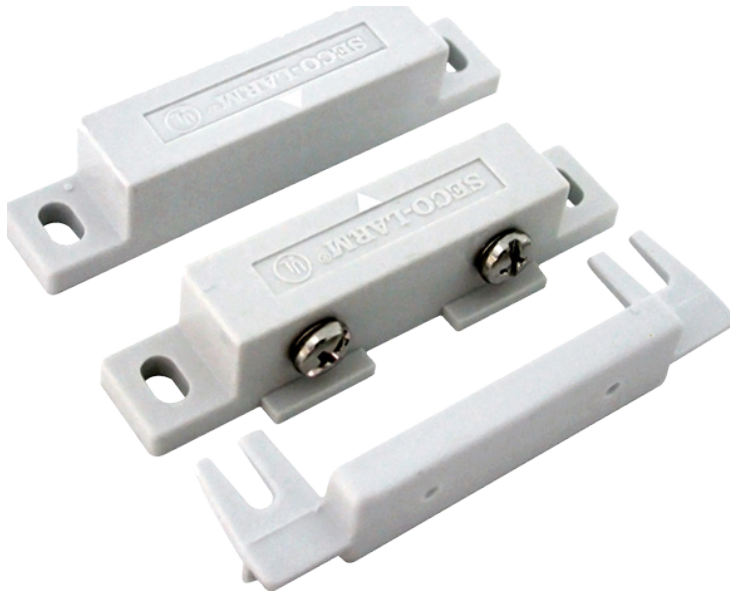


COMMERCIAL MAGNETIC DOOR SWITCH

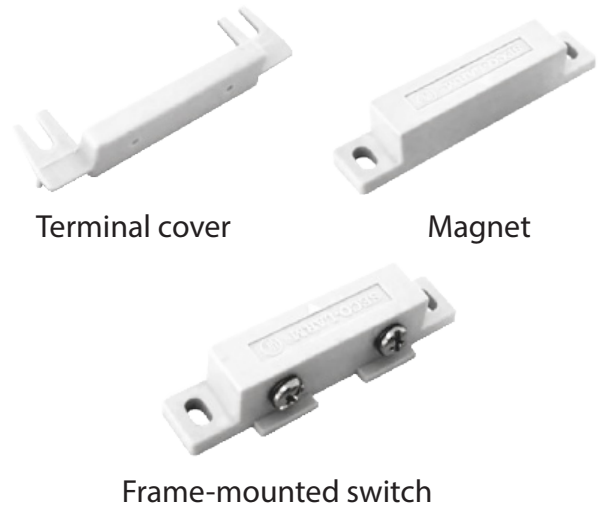
Technical Data



PRODUCT IMAGE



ALTERNATE VIEWS



FEATURES AND KEY PRODUCT INFORMATION

- ▶ Magnetic reed switch consists of a magnet and a switch.
- ▶ The magnet mounts to the door (or other item in motion) and the switch is wired and mounted in the frame. When the magnet separates from the switch, the switch closes and signals the air curtain to activate.
- ▶ Mounting tabs for ease of mounting.
- ▶ Terminal cover provided.
- ▶ Gold-plated screw terminals enhance durability and reliability.
- ▶ ABS plastic case includes lip to prevent accidental touching of wires on metal mounting/metal frames.

APPLICATION NOTES

Magnetic door switch serves as replacement for mechanical contacts.

Operates in almost any direction on swinging doors, sliding doors, etc.

For mounting on steel doors, use of a spacer may be necessary.

Note that the directional arrows located on the switch and magnet must align for proper operation

CERTIFICATIONS/LISTINGS



QUESTIONS & TECHNICAL SUPPORT AVAILABLE. CONTACT US DIRECTLY:

Phone Support
1-888-321-Aire (2473)

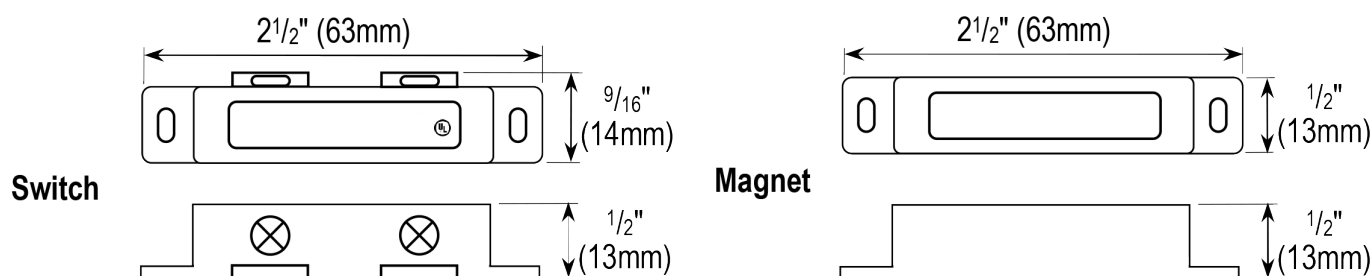
Email Support & Service
CustomerService@PoweredAire.com

Sales Questions
sales@PoweredAire.com

COMMERCIAL MAGNETIC DOOR SWITCH

Technical Data

PRODUCT DRAWING



Characteristics		
Electrical configuration		SPST
Operation gap		1/2" (13mm)
Connectors		Screw-terminals
Mounting tabs		Yes
Material	Case	High-impact ABS plastic
	Contacts	Deactivated rhodium on gold under-plating
Contact rating		10W (max.)
Operating temperature		-15°~160° F (-25°~70° C)
Switch cycles		50 Million
Switch dimensions		2 1/2"x9/16"x1/2" (63x14x13 mm)
Magnet dimensions		2 1/2"x1/2"x1/2" (63x13x13 mm)
Magnet type		Ferrite

Installation (Detailed instructions on following pages)

1. Mount the contact switch on the frame where the door/switch first starts to open (separate from magnet). For hinged doors, ensure that the mounting is farthest from the hinged side of the door.
2. Connect the two wires to the air curtain/control panel.
3. Mount the magnet on the door/window so that it will face the contact switch. Be sure that the gap between the switch and magnet does not exceed 1/2" (13mm). The switch and the magnet have white arrows on them that need to be aligned.

FOR TECHNICAL SUPPORT OR QUESTIONS, CONTACT US DIRECTLY:

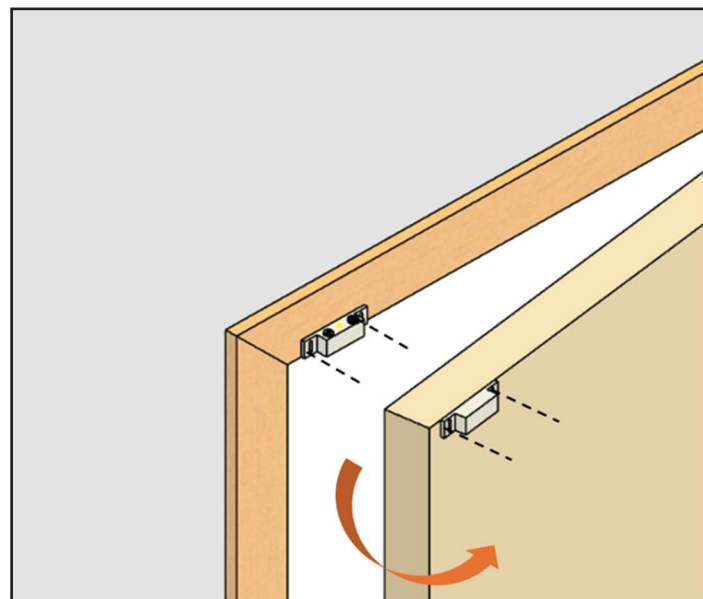
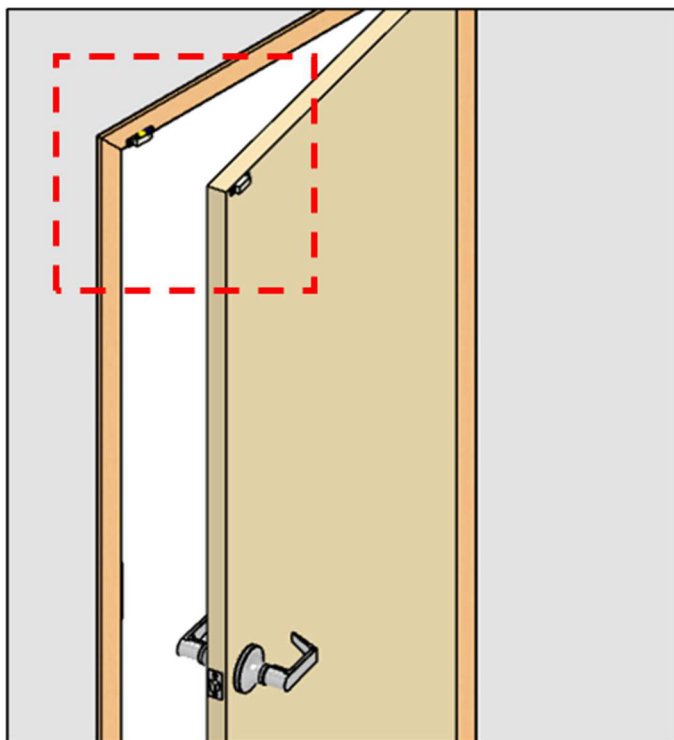
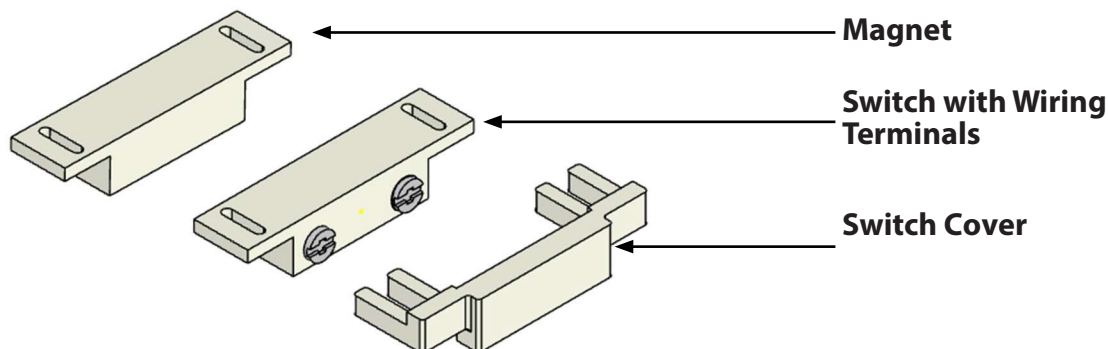
Phone Support
1-888-321-Aire (2473)

Email Support & Service
CustomerService@PoweredAire.com

Sales Questions
Sales@PoweredAire.com

SM-300 MAGNETIC DOOR SWITCH

Installation Instructions



Step 1:

Attach the Switch to the outside of the frame & the Magnet to the back of the door using (2) #6 round headed screws respectively.

Ensure that the Magnet piece is installed such that it lines up with the Switch when the door is closed. We recommend the pieces be separated by less than 1/2" to ensure proper detection.

FOR TECHNICAL SUPPORT OR QUESTIONS, CONTACT US DIRECTLY:

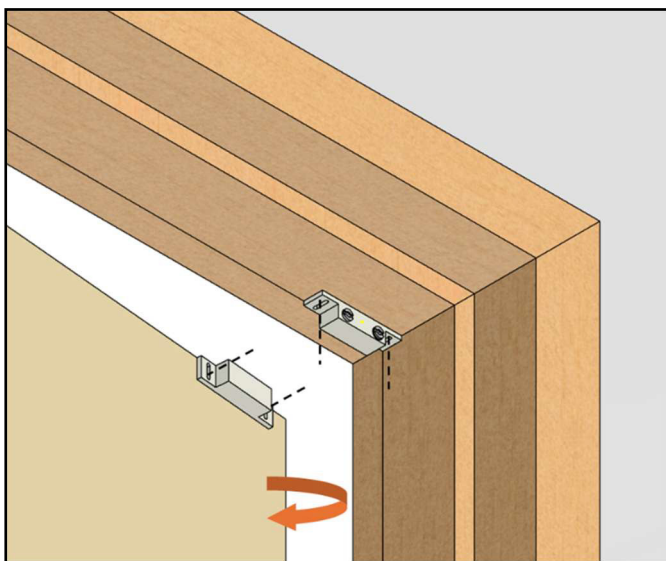
Phone Support
1-888-321-Aire (2473)

Email Support & Service
CustomerService@PoweredAire.com

Sales Questions
Sales@PoweredAire.com

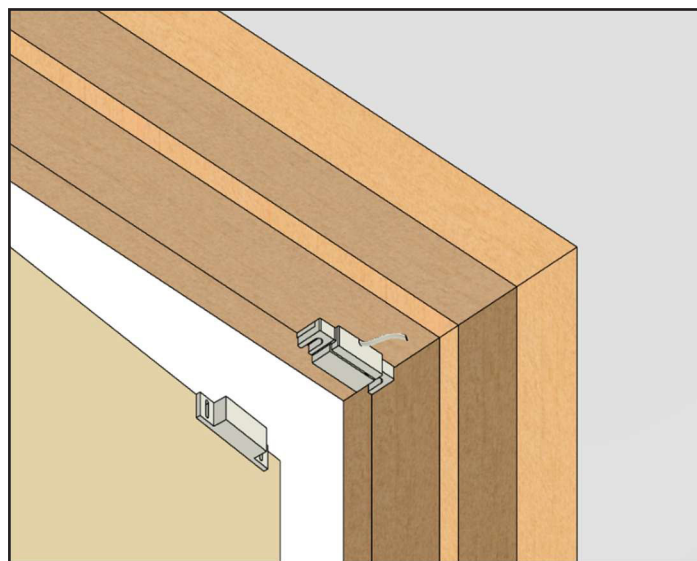
SM-300 MAGNETIC DOOR SWITCH

Installation Instructions



Alternate mounting:

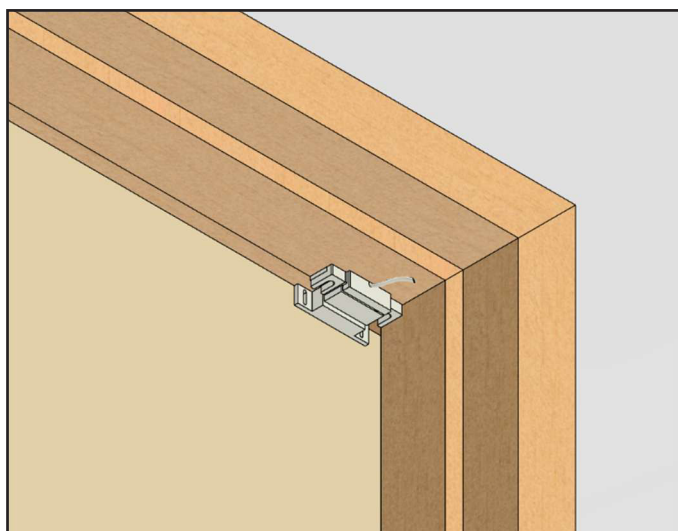
The door switch can also be installed on the inside of the frame as shown above. Ensure the Switch piece is mounted on the frame & the magnet, on the door & they line up when the door is closed.



Step 2:

Wire the Switch to the air curtain as per electrical schematics.

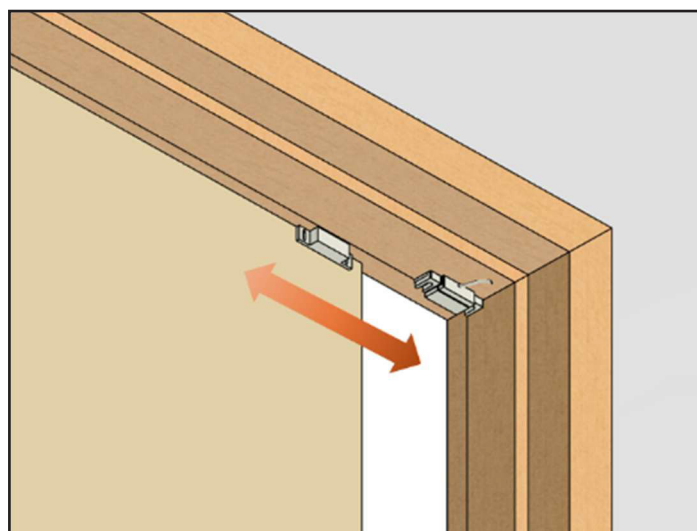
Cover the wiring terminals using the Switch cover.



Step 3:

Ensure correct operation of the door switch on door opening & closing.

The door switch has continuity and turns ON the air curtain when the Switch & Magnet are separated. Please contact Technical Support if your door switch is not operating as above.



For sliding doors:

Repeat the above steps for installation on Sliding doors.

Ensure sufficient clearance when installing the pieces so that they do not hit upon door operation.

For Steel Doors:

Use the included plastic spacers to offset the Switch &/or Magnet pieces to avoid interference to the magnetic field.

FOR TECHNICAL SUPPORT OR QUESTIONS, CONTACT US DIRECTLY:

Phone Support
1-888-321-Aire (2473)

Email Support & Service
CustomerService@PoweredAire.com

Sales Questions
Sales@PoweredAire.com