

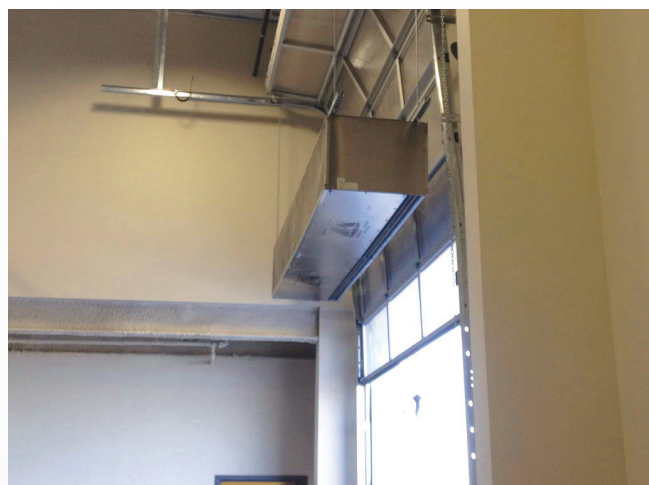
## ► BPA | MECHANICAL DETAILS

**BPA | Mechanical Information Table**

MODEL	Overall Width (in.)	Nozzle Width (in.)	Mounting Width Rear (in.)	Mounting Width Top (in.)
BPA-1-60	63	60	61.5	59
BPA-1-72	75	72	73.5	71
BPA-1-84	87	84	85.5	83
BPA-2-120	123.12	120.12	121.62	119.12
BPA-2-132	135.12	132.12	133.62	131.12
BPA-2-144	147.12	144.12	145.62	143.12
BPA-2-156	159.12	156.12	157.62	155.12
BPA-2-168	171.12	168.12	169.62	167.12
BPA-3-180	183.24	180.24	181.74	179.24
BPA-3-192	195.24	192.24	193.74	191.24
BPA-3-204	207.24	204.24	205.74	203.24
BPA-3-216	219.24	216.24	217.74	215.24
BPA-3-228	231.24	228.24	229.74	227.24
BPA-3-240	243.24	240.24	241.74	239.24
BPA-4-240	243.36	240.36	241.86	239.36



**Model BPA | Brackets with Strut**



**Model BPA | Top Mount (Threaded Rod)**

## ► BPA | MECHANICAL DRAWINGS

