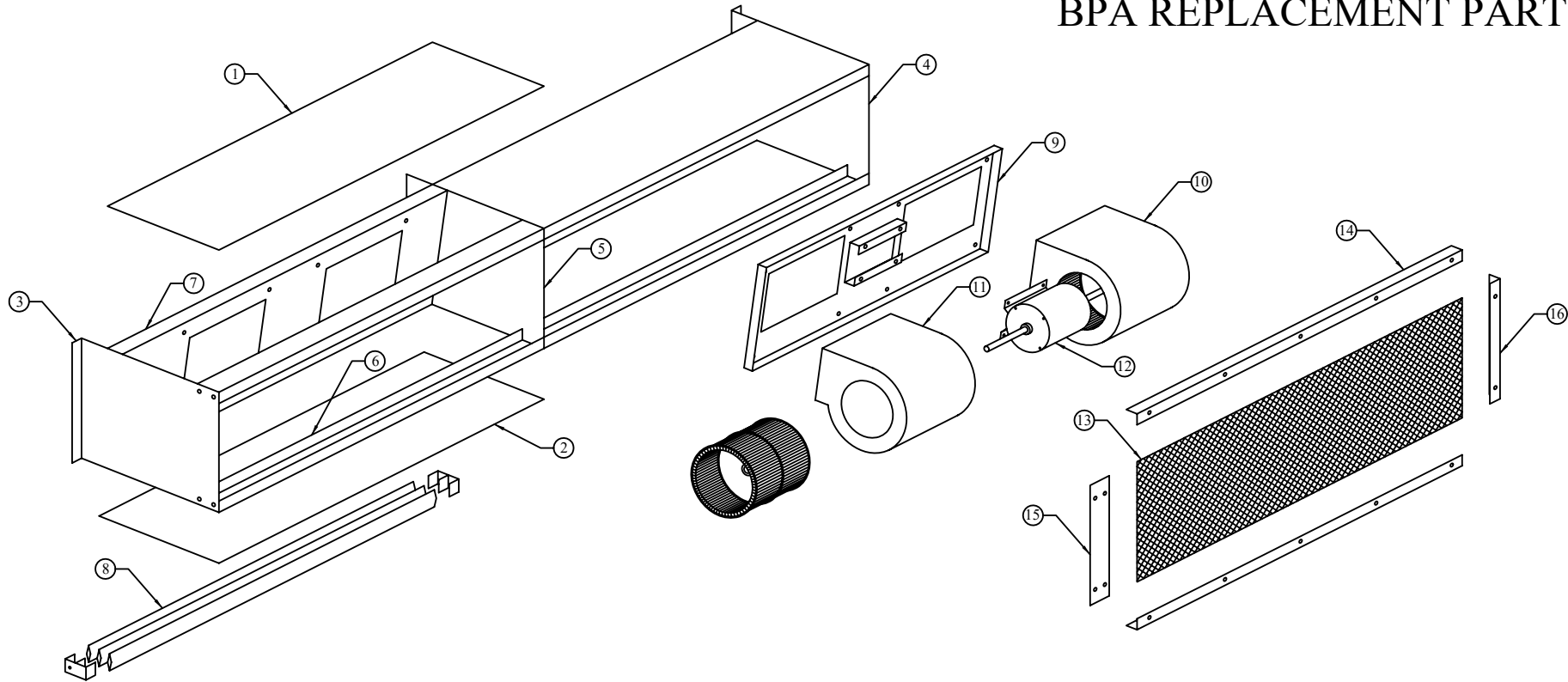


BPA REPLACEMENT PARTS



ITEM #	DESCRIPTION	PART #
1	60" TOP PANEL	BPA-60-TPL
1	72" TOP PANEL	BPA-72-TPL
1	84" TOP PANEL	BPA-84-TPL
2	60" BOTTOM PANEL	BPA-60-BPL
2	72" BOTTOM PANEL	BPA-72-BPL
2	84" BOTTOM PANEL	BPA-84-BPL
3	LEFT SIDE PANEL	BPA-LSP
4	RIGHT SIDE PANEL	BPA-RSP
5	INTERIOR SIDE PANEL	BPA-ISP
6	60" STRUT	BPA-60-STRT
6	72" STRUT	BPA-72-STRT
6	84" STRUT	BPA-84-STRT
7	60" PLENUM	BPA-60-PSA
7	72" PLENUM	BPA-72-PSA
7	84" PLENUM	BPA-84-PSA
8	60" STEERING VANE ASSEMBLY	BPA-60-SVA

ITEM #	DESCRIPTION	PART #
8	72" STEERING VANE ASSEMBLY	BPA-72-SVA
8	84" STEERING VANE ASSEMBLY	BPA-84-SVA
9	MOTOR / BLOWER PLATE	BPA-MTRPLT
10	RIGHT BLOWER WITH HOUSING	BPABLWR-R
11	LEFT BLOWER WITH HOUSING	BPABLWR-L
12	MOTOR, 7-1/2 H.P. (208-230/480V)	BPA-MTR-480
12	MOTOR, 7-1/2 H.P. (575V)	BPA-MTR-575
13	60" INTAKE SCREEN	BPA-60-SCR
13	72" INTAKE SCREEN	BPA-72-SCR
13	84" INTAKE SCREEN	BPA-84-SCR
14	60" TOP / BOTTOM SCREEN SUPPORT	BPA-60-TBSS
14	72" TOP / BOTTOM SCREEN SUPPORT	BPA-72-TBSS
14	84" TOP / BOTTOM SCREEN SUPPORT	BPA-84-TBSS
15	CENTER SCREEN SUPPORT	BPA-CSS
16	SIDE SCREEN SUPPORT	BPA-SSS

POWERED AIR TM INC. 109 Mortensen Rd. Greenville, PA 16125	
DATE: 10/01/13	POWERED AIR SYSTEMS
DRAWN BY: B.K.J.	MODEL BPA REPLACEMENT PARTS