

► CED-E | PERFORMANCE

CED-E | Performance Table

MODEL	Nozzle Width (in.)	Max. FPM at Nozzle	Avg. Outlet Velocity (FPM)	Airflow Rate (CFM)	Outlet Velocity Uniformity	Power Rating (kW)	Number of Motors	Motor HP	Heater kW	Temp. Rise (°F)	Weight (lbs)
CED-1-36E	36	3000	1074	795	87%	0.24	1	1/2	10	40	88
CED-1-42E	42	3000	1030	886	96%	0.24	1	1/2	10	36	95
CED-1-48E	48	3000	987	967	94%	0.25	1	1/2	10	33	102
CED-1-60E	60	3000	822	1011	89%	0.25	1	1/2	10	32	113
CED-2-72E	72	3000	1074	1590	87%	0.48	2	1/2	20	40	172
CED-2-84E	84	3000	1030	1772	96%	0.48	2	1/2	20	36	192
CED-2-96E	96	3000	987	1934	94%	0.50	2	1/2	20	33	206
CED-3-108E	108	3000	1074	2385	87%	0.72	3	1/2	30	40	244
CED-3-120E	118	3000	1039	2557	87%	0.73	3	1/2	30	37	272
CED-3-132E	133	3000	9660	2601	87%	0.73	3	1/2	30	37	285
CED-4-144E	145	3000	1074	3180	87%	0.96	4	1/2	40	40	344
CED-4-156E	157	3000	1051	3362	87%	0.96	4	1/2	40	38	362
CED-4-168E	169	3000	1030	3554	96%	0.96	4	1/2	40	36	380

! For a unit over 14 feet long, or a non-standard electric heater kW, consult factory.

CED-E | Velocity Projection

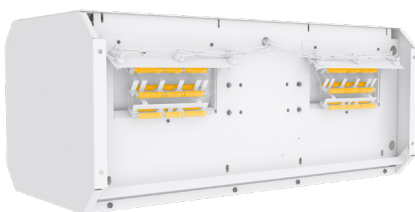
Distance From Nozzle	40"	80"	120"	160"
CED--1-36E Core Velocity (fpm)	859	675	542	437

CED-E | Sound Levels

Measured 10 ft. from unit in a free field based on a 1 motor unit 53 dBA

CED-E | Single Phase Motor Options

Voltages available	120	208/230	480	Note: 575v is transformed down to 120v
Amp draw per motor	2.5	1.4	0.7	



Performance Highlight

Heating elements are mounted inside the plenum, on the discharge side of the blowers. Here, heat won't affect motor life and the heaters are protected from dust that would accumulate on them if they were mounted on the air intake.

The AMCA Certified Ratings Seal applies to airflow rate, average outlet velocity, outlet velocity uniformity, velocity projection and power rating at free delivery only. Rated data shown are based on tests of units with heating elements present but not in use.

Powered Aire Inc. certifies that the Model CED-E Air Curtain shown herein is licensed to bear the AMCA Seal for Air Performance. The ratings shown are based on tests and procedures performed in accordance with AMCA Publication 211 and comply with the requirements of the AMCA Certified Ratings Program.

May 2020
PAAC-502

