

## ► CHS-HW/ST | PERFORMANCE

CHS-HW/ST | Performance Table

MODEL	Nozzle Width (in.)	Max. FPM at Nozzle	Avg. FPM	CFM at Nozzle	Outlet Velocity Uniformity	Number of Motors	Motor HP	Hot Water		Steam		Weight (lbs)
								mbtu / Hour	Temp. Rise (°F)	mbtu / Hour	Temp. Rise (°F)	
CHS-1-36HW/ST	36	5560	1205	892	88%	1	1/2	33	34	32	33	123
CHS-1-48HW/ST	48	4628	1131	1108	89%	1	1/2	40	33	41	34	134
CHS-1-60HW/ST	60	5096	998	1227	79%	1	1/2	48	36	49	36	170
CHS-2-72HW/ST	72	5560	1205	1784	88%	2	1/2	66	34	65	34	240
CHS-2-84HW/ST	84	5305	1209	2080	90%	2	1/2	78	34	76	34	271
CHS-2-96HW/ST	96	4628	1131	2216	89%	2	1/2	86	35	84	35	295
CHS-3-108HW/ST	108	5560	1205	2676	88%	3	1/2	102	35	98	34	355
CHS-3-120HW/ST	120	5028	1176	2892	88%	3	1/2	112	35	107	34	396
CHS-3-132HW/ST	132	4996	1111	3011	79%	3	1/2	119	36	115	35	459
CHS-4-144HW/ST	144	5560	1205	2568	88%	4	1/2	138	35	131	34	480

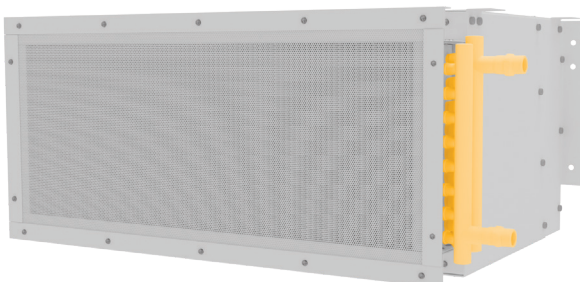
- ! For a unit over 12 feet long, consult factory.
- Performance values based off AMCA certified values of unheated CED air curtain.

### CHS-HW/ST | Sound Levels

High Speed	53 dBA	Low Speed	51 dBA	Measured 10 ft. from unit in a free field based on a 1 motor unit
------------	--------	-----------	--------	-------------------------------------------------------------------

### CHS-HW/ST | Single Phase Motor Options

Voltages available	120	208/230	480	<b>Note:</b> 575v is transformed down to 120v
Amp draw per motor	2.5	1.4	0.7	



#### Performance Highlight

Made-to-order steam or hot water coil mounted to intake of air curtain. Coil consists of 5/8 in. O.D. copper tubes and aluminum fins. Coils certified to ARI standard 410.