



EVE-HW



EVE-ST

EVE-HW/ST

LOW PROFILE



The EVE HW/ST offers the architecturally pleasing aesthetics found in all Elite Vestibule Exception (EVE) units but is fitted for applications where Hot Water or Steam is the primary source for heating. The valves protrude from the unit's side for easy connection to pre-existing pipes. The EVE HW/ST has been tested in accordance with the ANSI/AMCA 220 standard and can be used as an exception to vestibules in commercial applications including grocery stores, retail stores, restaurants, offices, and other new construction applications where a vestibule can be eliminated and replaced by an air curtain.

OPTIONS

HEATING

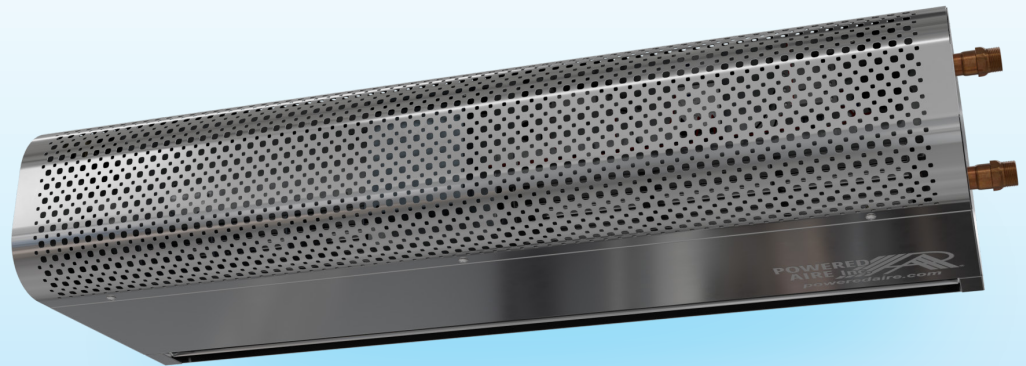
Unheatedpg 31
Electric.....pg 33

FILTER

½" Cleanable

FINISHES

- Stainless Steel (*shown*)
- Black
- White



AT A GLANCE

Single Incremental Widths

3' to 10'

Max Installation Height

12'

Heavy Duty Motors

1/5 HP

KEY DESIGN FEATURES

- Low-profile outer cabinet available in brushed stainless steel, matte black, or gloss white
- 1/5 HP ODP (Open Drip Proof) direct-drive variable-speed motor(s)
- Adjustable air foil vane (+/-20°)
- NEMA 12 control panel
- Coil made to AHRI Standard 410
- Hot water coil comprised of galvanized steel casing, 5/8" copper tube, aluminum fins, and same end supply/return connections
- Leak tested at 450 psi
- Custom coil selections available (consult factory)

RECOMMENDED CONTROLS & ACCESSORIES

- Activation by 24V magnetic door switch
- SmartTouch controller
- Hot water or steam control valve with actuator

