

Installation: Brackets

Mounting brackets (also called knee, angle or L-brackets) can be flush to the wall or constructed to account for a projection from the wall. They are typically used when there are obstructions to clear. For proper size brackets measure standoff distance from wall to back of where air curtain will be.

FOR COMMERCIAL



Standard Strut Brackets

Standard strut brackets can be constructed for installing the air curtain flush to the surface, or with a standoff distance (distance from the surface to the back of the air curtain).

FOR INDUSTRIAL



Angle Iron Brackets

Brackets are constructed of angle iron for larger, heavier air curtain models in the industrial lines.

*Powered Aire does not supply threaded rods.

FOR LARGE INDUSTRIAL



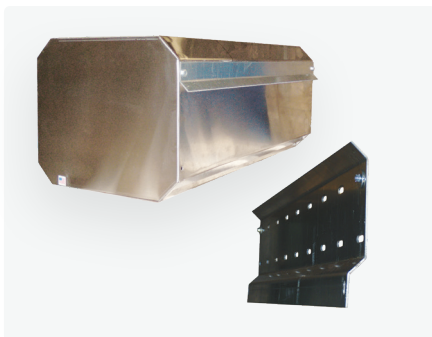
Welded Steel Brackets

Custom welded steel tube brackets are used with Powered Aire's extremely large industrial models, or large offset distances.



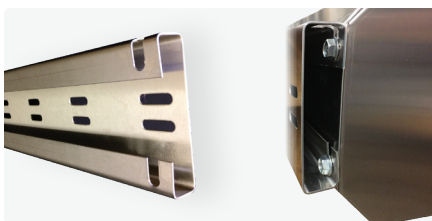
Optional Strut

When there are obstacles to go around, such as sectional door tracks, two pieces of strut can be attached to the top of the air curtain. By making the strut longer at each end they will extend past the tracks to reach the brackets.



MB123 Quick Mounting Plate

The MB 123 consists of a plate with a universal hole pattern that is attached to the wall and a bar that is attached to the air curtain. The back side of our commercial air curtains have four standard mounting holes. The MB123 can be used when the holes do not line up with wall studs or other structural supports. With this mounting option, the weight of the unit does not have to be supported while the lags are being installed.



LP123 Bracket

Universal mounting slots are used to lag the bracket to the wall (bolts by others). 3/8" mounting bolts (supplied) are threaded into the holes located in all four corners of the back side of the air curtain, leaving 1/2" of the bolts exposed. The air curtain is lifted into place onto the bracket so the exposed bolt heads slide into the four notches. Bolts are tightened to cause air curtain to fit snugly against bracket.