

► MP | PERFORMANCE

MP | Performance Table

| MODEL | Nozzle Width (in.) | Max. FPM at Nozzle | Avg. Outlet Velocity (FPM) | Airflow Rate (CFM) | Outlet Velocity Uniformity | Power Rating (kW) | Number of Motors | Motor HP | Weight (lbs) |
|----------|--------------------|--------------------|----------------------------|--------------------|----------------------------|-------------------|------------------|----------|--------------|
| MP-1-30 | 29 | 3050 | 1335 | 801 | 66% | 0.22 | 1 | 1/5 | 42 |
| MP-1-36 | 35 | 3262 | 1348 | 984 | 84% | 0.28 | 1 | 1/5 | 53 |
| MP-1-42 | 41 | 3269 | 1462 | 1243 | 84% | 0.33 | 1 | 1/5 | 60 |
| MP-1-48 | 48 | 3256 | 1520 | 1474 | 85% | 0.38 | 1 | 1/5 | 67 |
| MP-1-60 | 59 | 3218 | 1529 | 1865 | 84% | 0.46 | 1 | 1/5 | 85 |
| MP-2-72 | 71 | 3262 | 1348 | 1968 | 84% | 0.56 | 2 | 1/5 | 94 |
| MP-2-84 | 83 | 3269 | 1462 | 2486 | 84% | 0.66 | 2 | 1/5 | 105 |
| MP-2-96 | 95 | 3256 | 1520 | 2948 | 85% | 0.76 | 2 | 1/5 | 114 |
| MP-2-108 | 107 | 3242 | 1525 | 3339 | 84% | 0.84 | 2 | 1/5 | 130 |
| MP-2-120 | 117 | 3218 | 1529 | 3730 | 84% | 0.92 | 2 | 1/5 | 141 |

! For Hot Water or Steam heat, consult factory.

MP | Velocity Projection

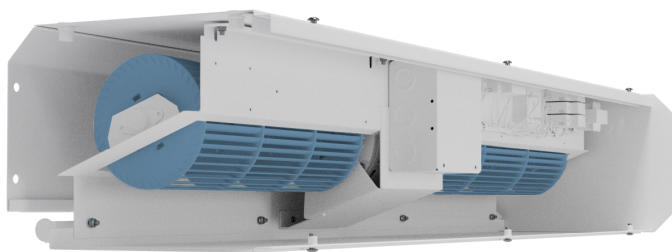
| Distance From Nozzle | 40" | 80" | 120" | 160" |
|-----------------------------|------|-----|------|------|
| MP-1-36 Core Velocity (fpm) | 1048 | 784 | 677 | 603 |

MP | Sound Levels

| | |
|---|--------|
| Measured 10 ft. from unit in a free field based on a 1 motor unit | 53 dBA |
|---|--------|

MP | Single Phase Motor Options

| | | | | |
|--------------------|-----|---------|-----|-----|
| Voltages available | 120 | 208/230 | 480 | 575 |
| Amp draw per motor | 4.4 | 2.0 | 1.1 | 0.9 |



Performance Highlight

This unit can fit a larger diameter tangential blower wheel than competitors' models to increase performance without increasing size. The motor/ blower plate comes out of the unit as an entire piece and the electrical connections can be made on the top or sides of the unit for more versatility.

The AMCA Certified Ratings Seal applies to airflow rate, average outlet velocity, outlet velocity uniformity, velocity projection and power rating at free delivery only.

Powered Aire Inc. certifies that the Model MP Air Curtain shown herein is licensed to bear the AMCA Seal for Air Performance. The ratings shown are based on tests and procedures performed in accordance with AMCA Publication 211 and comply with the requirements of the AMCA Certified Ratings Program.

May 2020
PAAC-601

