

► RMP | PERFORMANCE

RMP | Performance Table

MODEL	Nozzle Width (in.)	Max. FPM at Nozzle	Avg. FPM	CFM at Nozzle	Outlet Velocity Uniformity	Number of Motors	Motor HP	Weight (lbs)
RMP-1-30	29	3050	2045	897	92%	1	1/5	42
RMP-1-36	35	3050	2142	1178	95%	1	1/5	53
RMP-1-42	41	3050	2086	1339	95%	1	1/5	60
RMP-1-48	47	3050	2045	1500	92%	1	1/5	67
RMP-1-60	59	3050	1928	1767	92%	1	1/5	85
RMP-2-72	71	3050	2142	2356	95%	2	1/5	94
RMP-2-84	83	3050	2087	2678	95%	2	1/5	105
RMP-2-96	95	3050	2045	3005	95%	2	1/5	114
RMP-2-108	107	3050	2142	3534	95%	2	1/5	130
RMP-2-120	117	3050	2103	3856	95%	2	1/5	141

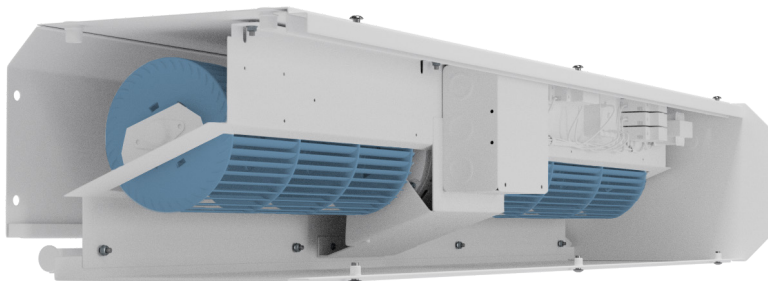
! For a unit over 10 feet long, consult factory.

RMP | Sound Levels

High Speed 53 dBA Measured 10 ft. from unit in a free field based on a 1 motor unit

RMP | Single Phase Motor Options

Voltages available	120	208/230	480	575
Amp draw per motor	4.0	2.0	1.1	0.9



Performance Highlight

This unit can fit a larger diameter tangential blower wheel than competitors' models to increase performance without increasing size. The motor/blower plate comes out of the unit as an entire piece and the electrical connections can be made on the top or sides of the unit for more versatility.