

► TFD-E | PERFORMANCE

TFD-E | Performance Table

Model	Nozzle Width (in.)	Max. FPM at Nozzle	Avg. Outlet Velocity FPM	CFM at Nozzle	Outlet Velocity Uniformity	Power Rating (kW)	Number of Motors	Motor HP	Sound Pressure (dBA)*	Sound Power [LWA] (dBA)	Electric Heat		Weight (lbs.)
											Heater KW	Temp Rise (°F)	
TFD-1-36E	36	4500	3108	2331	92.0%	1.2	1	1.5	73	87	20	27	141
TFD-1-48E	48	4500	3565	2565	94.0%	1.3	1	1.5	76	90	20	25	181
TFD-1-60E	60	4500	2146	2682	73.0%	1.3	1	1.5	69	82	20	24	225
TFD-2-72E	72	4500	3108	4662	92.0%	2.4	2	1.5	76	90	40	27	300
TFD-2-84E	84	4500	2798	4896	92.0%	2.6	2	1.5	79	93	40	26	342
TFD-2-96E	96	4500	2565	5130	94.0%	2.6	2	1.5	79	93	40	25	375
TFD-2-108E	108	4500	2332	5247	73.0%	2.6	2	1.5	79	93	40	24	409
TFD-3-108E	108	4500	3108	6993	92.0%	3.6	3	1.5	77	92	60	27	445
TFD-3-120E	120	4500	2891	7227	92.0%	3.7	3	1.5	80	95	60	26	494
TFD-3-132E	132	4500	2713	7461	92.0%	3.8	3	1.5	80	95	60	25	570
TFD-4-144E	144	4500	3108	9324	92.0%	4.8	4	1.5	79	93	80	27	598
TFD-4-156E	156	4500	2941	9558	92.0%	4.9	4	1.5	82	96	80	26	618
TFD-4-168E	168	4500	2798	9792	92.0%	5.0	4	1.5	82	96	80	26	638

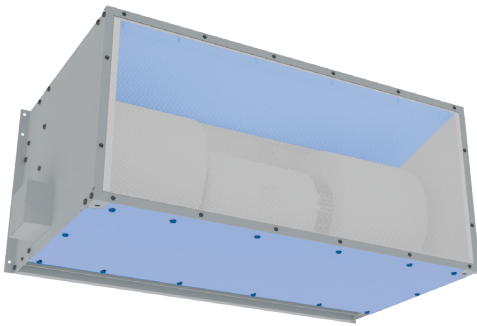
*Calculation based on spherical free field at 5 ft.



For a unit over 14 feet long, consult factory.
For Top Intake, consult factory.

TFD-E | Three Phase Motor Options

Voltages available	120	208	240	480	575
Amp draw per motor	NA	5.0	4.6	2.3	1.9



Performance Highlight

The TFD-E has top and bottom access panels to replace or service motors or blowers without lowering entire unit or bottom half of unit. With hot water and steam heat these access panels enable service to the unit without removing the coils.