

► THS-HW/ST | PERFORMANCE

THS-HW/ST | Performance Table

MODEL	Nozzle Width (in.)	Max. FPM at Nozzle	Avg. FPM	Max. CFM	CFM at Nozzle	Outlet Velocity Uniformity	Number of Motors	Motor HP	Hot Water		Steam		Weight (lbs)
									mbtu / Hour	Temp. Rise (° F)	mbtu / Hour	Temp. Rise (° F)	
THS-1-36HW/ST	36	H 4218 L 2837	H 3695 L 2487	H 2899 L 1950	H 2541 L 1710	95%	1	3/4	97	H 35 L 52	108	H 39 L 58	113
THS-1-48HW/ST	48	H 4218 L 2837	H 2771 L 1865	H 3867 L 2601	H 2559 L 1721	92%	1	3/4	102	H 37 L 54	108	H 39 L 58	145
THS-1-60HW/ST	60	H 4218 L 2837	H 2218 L 1493	H 4374 L 2792	H 2528 L 1703	91%	1	3/4	100	H 36 L 54	114	H 41 L 61	180
THS-2-72HW/ST	72	H 4218 L 2837	H 3696 L 2488	H 5803 L 3903	H 5082 L 3420	95%	2	3/4	194	H 35 L 52	202	H 36 L 54	249
THS-2-84HW/ST	84	H 4218 L 2837	H 3169 L 2133	H 6766 L 4551	H 5063 L 3382	93%	2	3/4	205	H 37 L 55	210	H 38 L 57	281
THS-2-96HW/ST	96	H 4218 L 2837	H 2773 L 1866	H 7732 L 5201	H 5081 L 3417	92%	2	3/4	194	H 35 L 52	215	H 39 L 58	306
THS-2-108HW/ST	108	H 4218 L 2837	H 2472 L 1661	H 8216 L 5520	H 5090 L 3421	95%	2	3/4	192	H 35 L 52	198	H 36 L 54	329
THS-3-108HW/ST	108	H 4218 L 2837	H 3702 L 2486	H 8702 L 5853	H 7623 L 5130	92%	3	3/4	283	H 34 L 51	292	H 35 L 52	365
THS-3-120HW/ST	120	H 4218 L 2837	H 3174 L 2134	H 9668 L 6503	H 7614 L 5127	95%	3	3/4	307	H 37 L 55	305	H 37 L 55	406
THS-3-132HW/ST	132	H 4218 L 2837	H 2792 L 1885	H 10177 L 7155	H 7589 L 5104	95%	3	3/4	307	H 37 L 55	326	H 39 L 59	470
THS-4-144HW/ST	144	H 4218 L 2837	H 3696 L 2488	H 11606 L 7806	H 10164 L 6840	95%	4	3/4	388	H 35 L 52	390	H 35 L 52	491

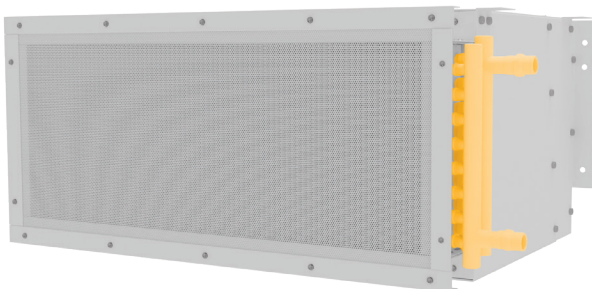
! For a unit over 12 feet long, consult factory.

THS-HW/ST | Sound Levels

High Speed	63 dBA	Low Speed	56 dBA	Measured 10 ft. from unit in a free field based on a 1 motor unit
------------	--------	-----------	--------	---

THS-HW/ST | Single Phase Motor Options

Voltages available	120	208/230	480	575	For three phase motors, consult factory
Amp draw per motor	8.0	3.6	2.0	1.5	



Performance Highlight

Made-to-order steam or hot water coil mounted to intake of air curtain. Coil consists of 5/8 in. O.D. copper tubes and aluminum fins. Coils certified to ARI standard 410.