

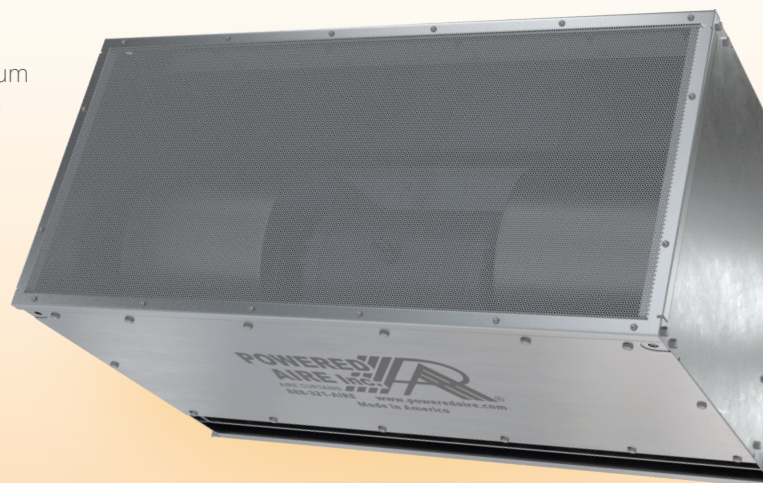


TSD-E



The TSD-E is an electrically heated air curtain designed to provide complete coverage (as well as electric heat) over dock doors, delivery doors and warehouse doors. This industrial-focused air curtain is ideal for doors with openings typically between 12 and 17 feet. With the complement of electric heat, the TSD Air Door effectively blocks cold winter air, helping to create a warmer working area on and around dock/delivery doors while also preventing the infiltration of dust, insects and fumes.

The TSD-E includes a direct-drive motor that helps ensure a maximum operating life by eliminating the need to replace belts or the chance of coupler misalignment. The unit is also designed with ease-of-installation in mind, arriving as a single unit. The TSD-E features automatic and manual limit switches for over temperature protection, Airflow switches that prevent heating element operation when fans are off, and customizable heating KWs.



OPTIONS

HEATING

Unheated, Hot Water, Steam, Direct Gas, Indirect Gas

AT A GLANCE

Single Incremental Widths

4' to 30'

Max Installation Height

17'

Heavy Duty Motors

3 HP

KEY DESIGN FEATURES

- Outer cabinet constructed of 18-gauge 304 stainless steel with #3 finish
- 3 HP TEAO (Totally Enclosed Air Over) direct-drive single-speed motor(s)
- High-efficiency discharge plenum with adjustable air foil vane (+/-20°)
- Top and bottom access panels for servicing and removal of motor-blower assembly
- NEMA 12 control panel with factory installed magnetic motor starter, overload relays, and control transformer
- Open coil multi-stage heating elements with factory mounted panel(s)
- Single point power connection available (see electrical table)
- Alternate heater kW available (consult factory)

RECOMMENDED CONTROLS

- Activation by 24V magnetic door switch
- Toggle disconnect switch(s)
- Hand/Off/Auto selector switch
- Heat On/Off selector switch
- Digital thermostat

